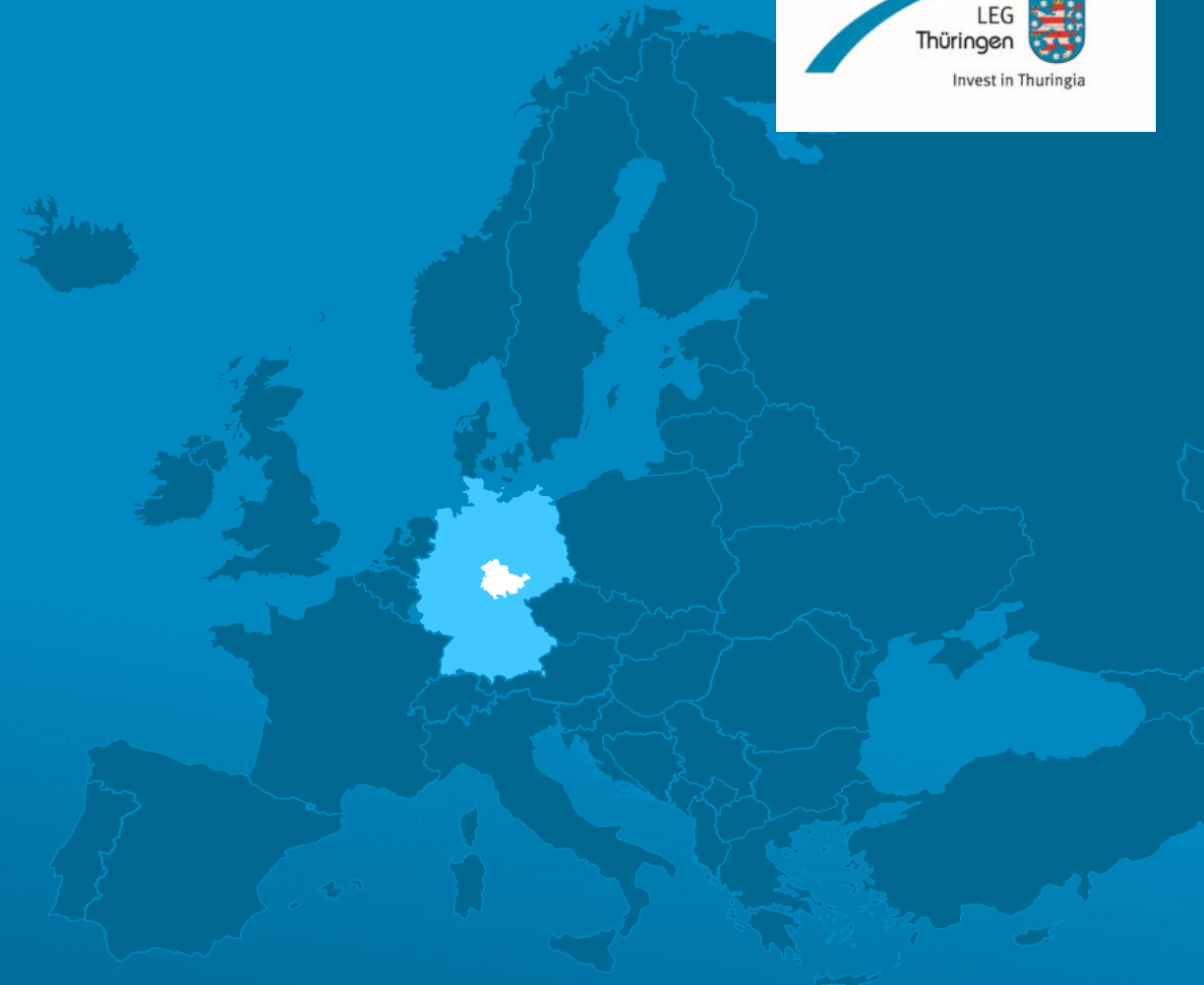

Thuringia

Your smart gateway to the European Market





Central location in Europe

- > In the center of Germany – Europe’s largest market
- > **GDP:** 4,120 bn Euro (rounded)
- > **Exports:** 1,560 bn Euro (rounded)
- > Leading edge logistics and infrastructure

within a radius of 800 km:

280 m
potential customers

70%
of the European GDP

70%
of the European
purchasing power

80%
of the R&D expenses
in the EU

Source: Thuringian Statistics Office, destatis, EUROSTAT/OECD, Statista
Status: March 2024

Perfectly connected



> From Thuringia, every major German city can be reached in a maximum of **5 hours** by truck

> **Driving times by car** from Erfurt to:

Frankfurt	2h15
Berlin	2h15
Munich	3h15

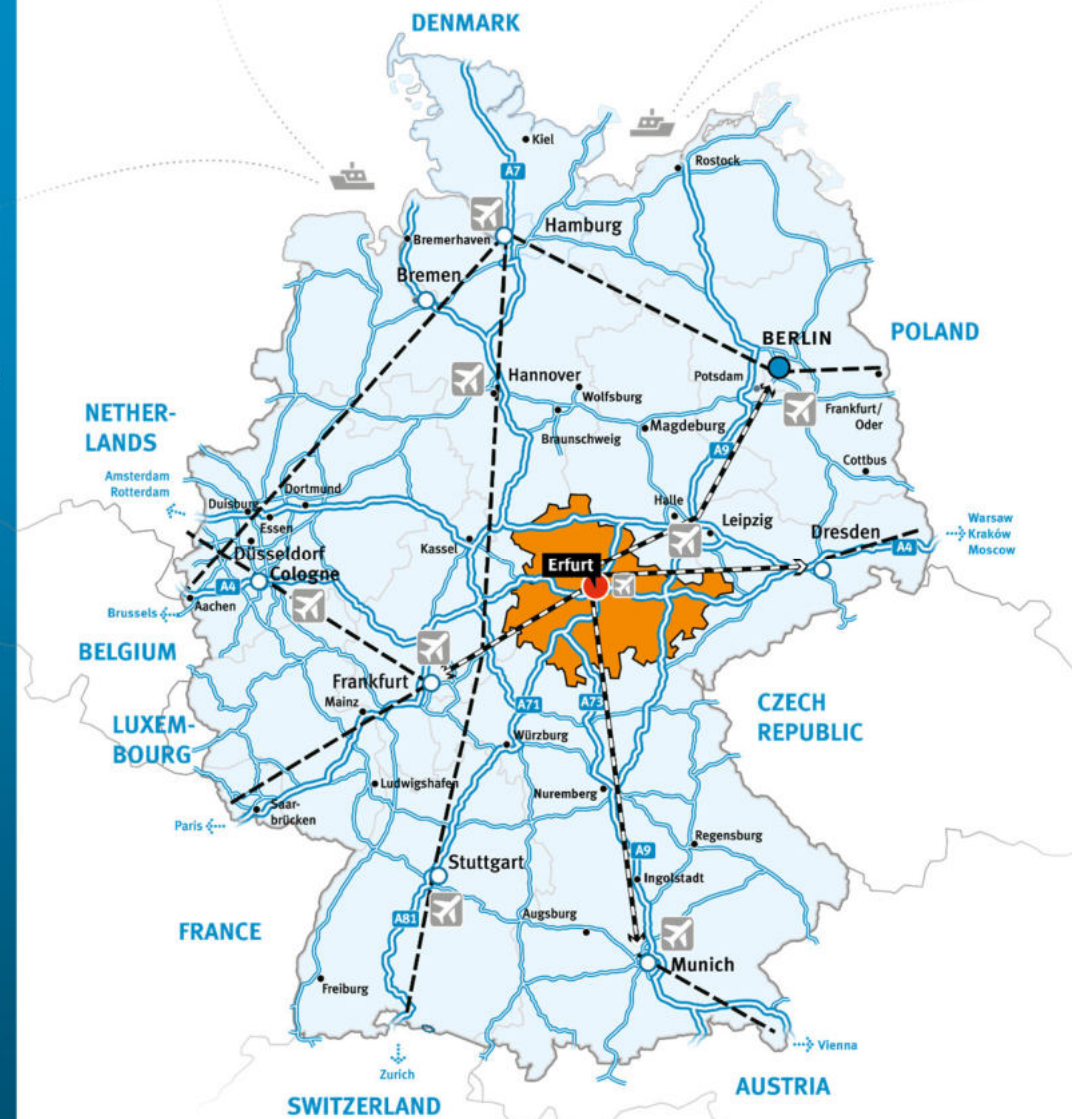


> **Erfurt = ICE – bullet train hub**

> From Erfurt to:

Leipzig	0h45
Frankfurt airp.	2h15
Berlin	1h40
Munich	2h15

> 80 ICE bullet trains stop in Erfurt per day



Key Sectors



Optics/Optoelectronics

- 186 companies
- 18,300 employees
- 3.8 bn Euro sales



Electronic, semiconductor, sensor industry

- 230 companies
- 25,000 employees
- 5 bn Euro sales



Mechanical engineering and automation

- 920 companies
- 31,300 employees
- 3.2 bn Euro sales



Life Sciences

- 640 companies
- 30,000 employees
- 6.1 bn Euro sales



Automotive and supplier industry

- 730 companies
- 67,600 employees
- 10.3 bn Euro sales



Plastics industry

- 500 companies
- 33,900 employees
- 4.7 bn Euro sales



ICT

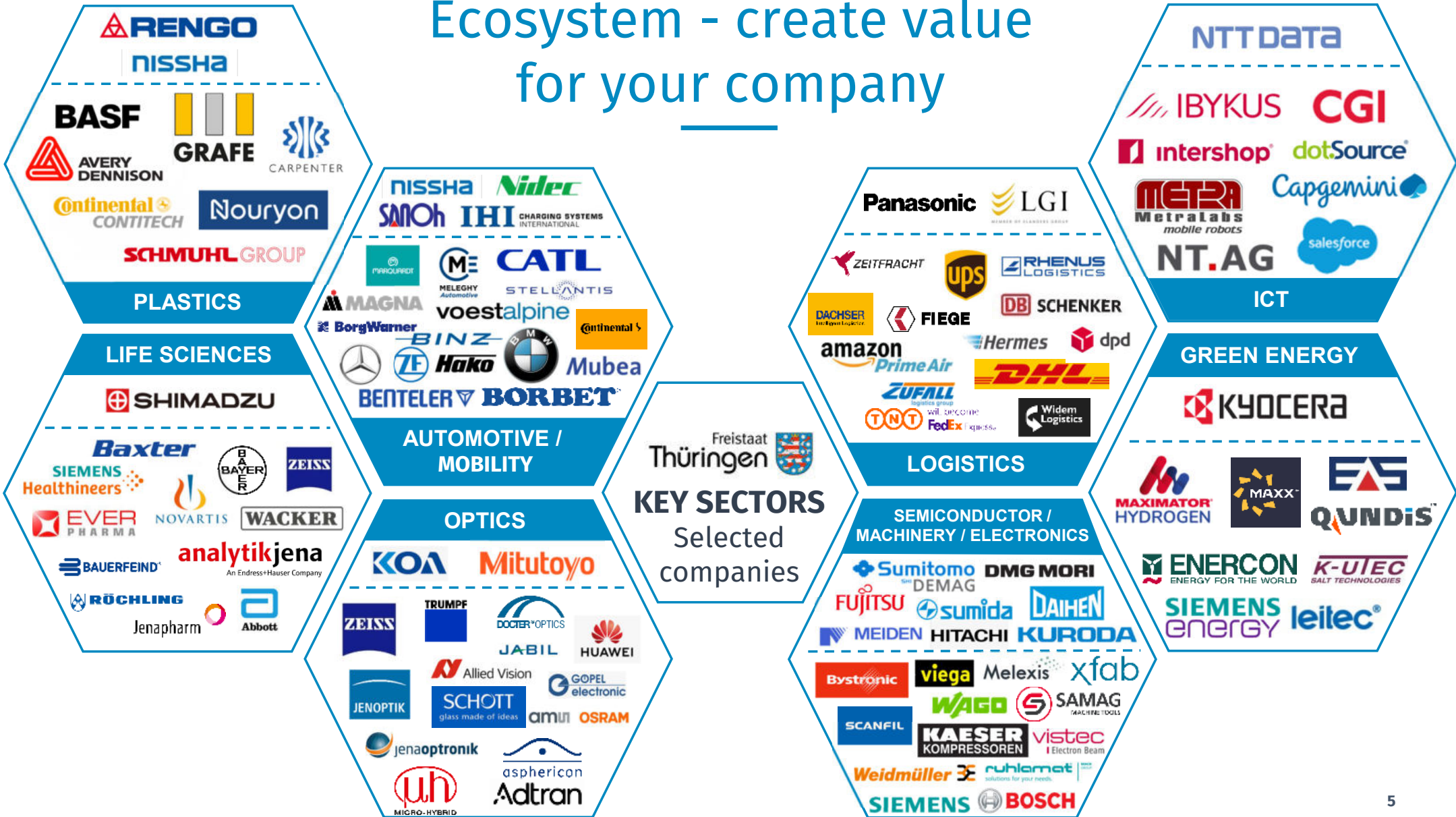
- 1,000 companies
- 21,000 employees



Logistics

- 700 companies
- 24,300 employees
- 2.9 bn Euro sales

Ecosystem - create value for your company



Research and science

Thuringia – land of science



Friedrich-Schiller-University Jena

- > 10 excellent universities and universities of applied sciences with about **50,000 students**
- > One of the worldwide largest share of MINT/STEM students
- > 28 research institutes of **Fraunhofer, Leibniz, Max Planck, Helmholtz and Konrad Zuse society**
- > 12 **technology and business incubators**
- > about **12,000 employees** in R&D
- > Jena scores with the **highest rate of university graduates** (of all employees) in Germany: almost 36%

LEG – Your One-Stop-Agency

Investment. Expansion. Growth. The experts from LEG Thüringen accompany all projects with a comprehensive range of services.

Your partner in the whole process for



Site development



Financing and incentive consulting



Information on business and regional data



Identifying partners



Recruitment and qualification assistance



Liaising with local authorities



Consulting on new technologies



Export promotion

1.780

Projekte



87.800

Jobs



~ 14 Mrd. €

Invest



Construction site of CATL in Arnstadt



Design of the future Carl Zeiss Campus in Jena

A team experienced with large projects is at your service around the clock.

- January 2025 **Kyocera Fin ceramics Europe GmbH** starts production in Erfurt
- 2024 **Hitachi Rail** takes over production from Thales GTS in Arnstadt and employs 430 people
- Giga factory for battery production of **Contemporary Ampere Technology Ltd. – CATL** with an investment of 2.2 bn USD creating 3,000 jobs in Arnstadt
- Carl Zeiss Campus Jena** with an investment of 430m USD creating 2,500 jobs

Japan and Thuringia - Outlook 2025



March 31st – April 4th Hannover Fair

Thuringia Pavilion at Hall 6 Booth F61

- > April 2nd **Thuringian booth party** with Thuringian Minister of Economic Affairs and Thuringian company delegation **starting at 6:00 pm**
- > April 3rd **Trade & Invest Stage 2:30 pm**
Presentation: *Thuringia - best investment conditions in the center of Germany and Europe*

April 23rd – 25th OPIE Fair in Yokohama

Thuringia Pavilion at Booth H-10 & networking event

June Expo Osaka

Thuringia exhibition week at German Pavilion

Invest in Thuringia:

- > **May 12th – 16th Business trip to Osaka & Tokyo**
- > In fall: Business trip & Business Dinner
- > Deepening the **19-year partnership with the Hamamatsu region**

Thuringia – A great place to live



UNESCO World Heritage Site: The 1000-year-old Wartburg Castle. And UNESCO World Heritage Natural Site Ancient Beech Forests Hainich National Park in Eisenach



Memorial to the poets and philosophers Goethe and Schiller in Weimar



Traditional cuisine: The Thuringian Bratwurst



An annual winter sports highlight in Oberhof: The Biathlon World Cup.



Erfurt's medieval cultural heritage: The 700-year-old bridge Krämerbrücke.



UNESCO World Heritage Bauhaus Art Design from 1919 in Weimar: An exhibition example staged in the Duchess Anna Amalia Library (1691)



State Development
Corporation of Thuringia
(LEG Thüringen)



Holger Heyer

Deputy Head of Department
*Department of Investment, International Business
and Cluster Promotion*



holger.heyer@leg-thuringen.de



+49 (0) 361 5603 477



www.invest-in-thuringia.de

Please contact us!



Sebastian Scheit

Director East Asia
*Department of Investment, International Business
and Cluster Promotion*



sebastian.scheit@leg-thuringen.de



+49 (0) 361 5603 457



www.invest-in-thuringia.de